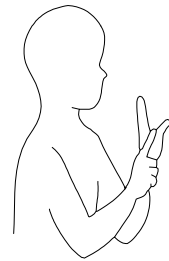
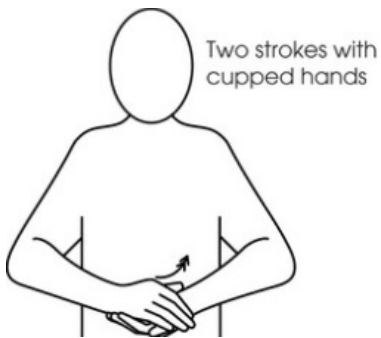


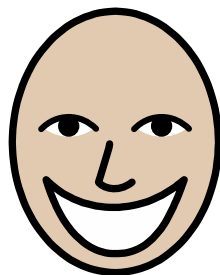
## Sign of the Week



Happy

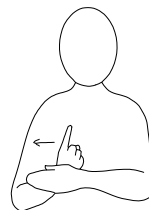
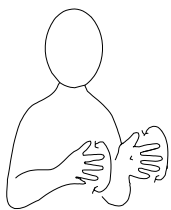
New

Year

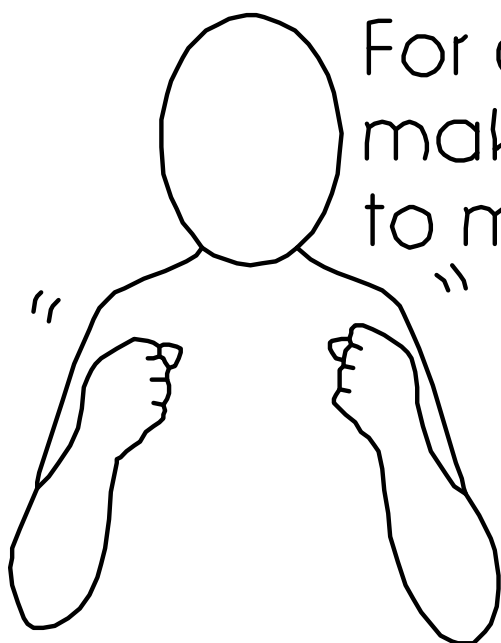


Happy

New Year

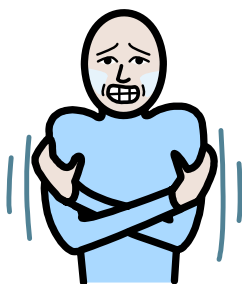


## Sign of the Week

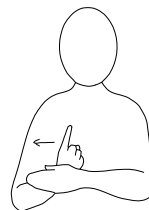
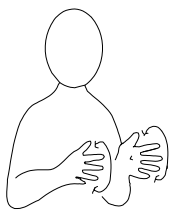


For cold food  
make sign closer  
to mouth

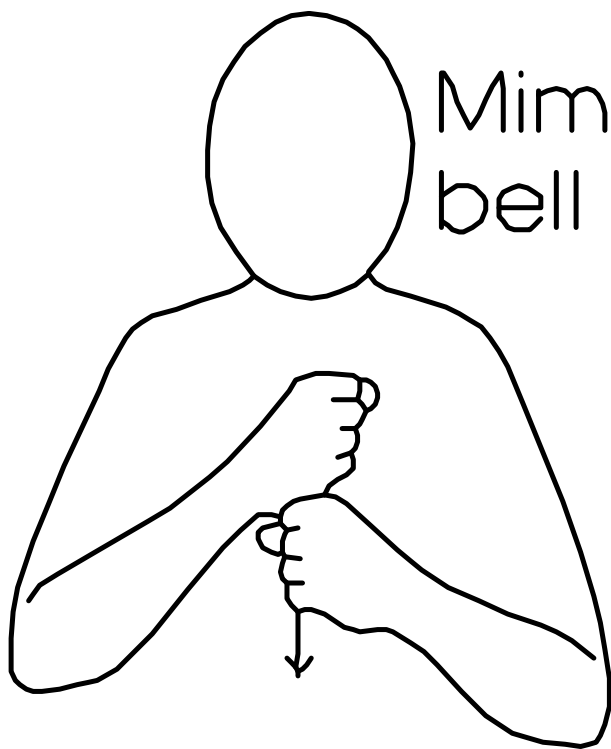
# cold



# cold

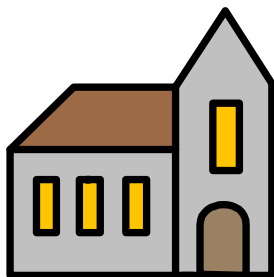


## Sign of the Week

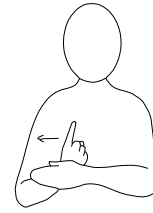
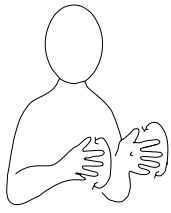


Mime pulling  
bell rope

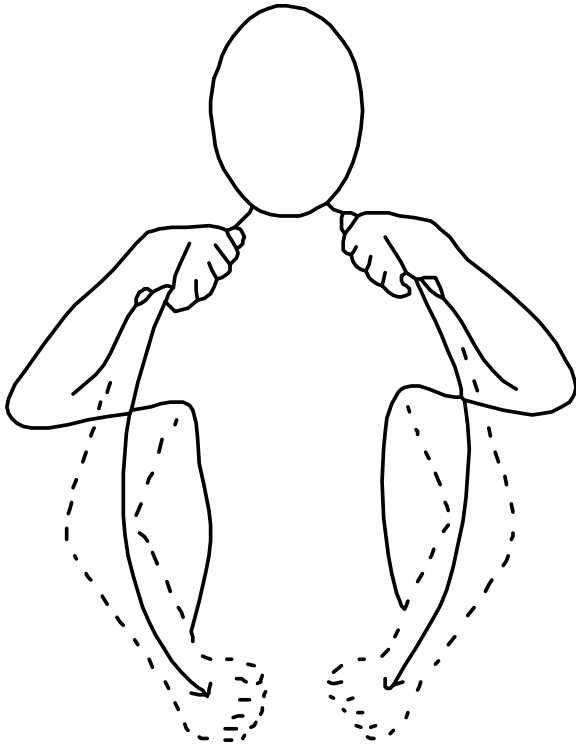
# church



church

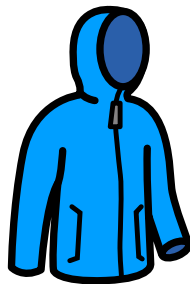


## Sign of the Week

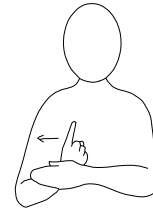
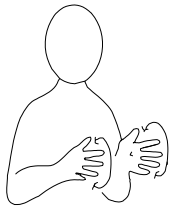


Mime  
putting coat  
on over  
shoulders,  
show  
appropriate  
length

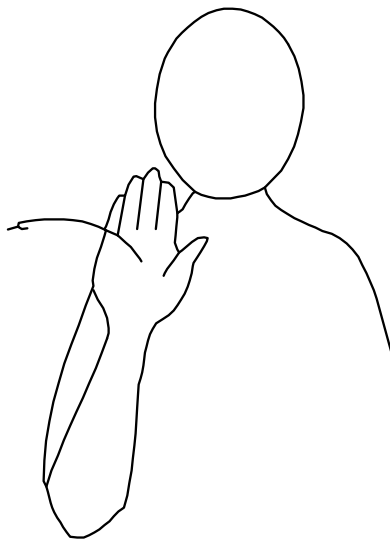
# coat



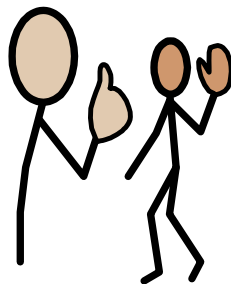
coat



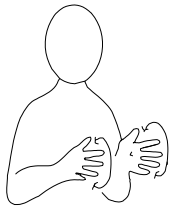
## Sign of the Week



# Nia hao

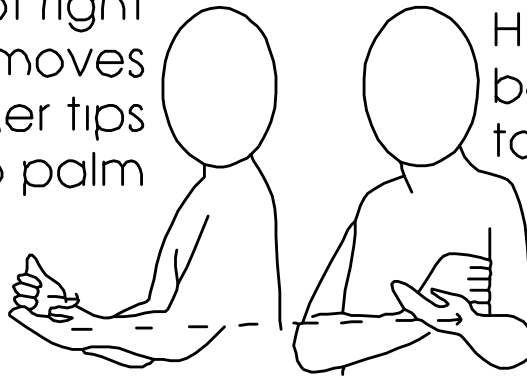


Nia hao



## Sign of the Week

Blade of right  
cupped hand moves  
from left finger tips  
onto palm

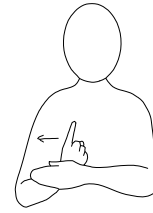
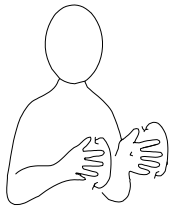


Hands move  
back together to  
touch body

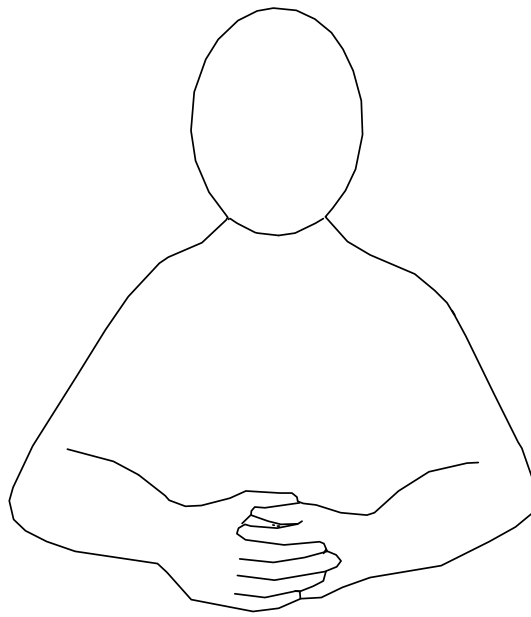
# safe



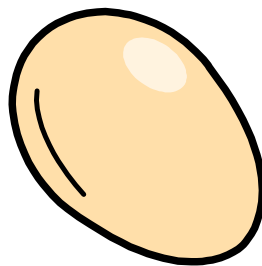
# safe



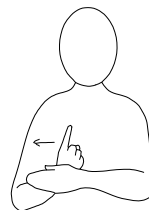
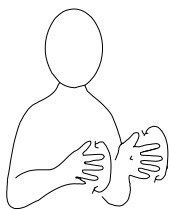
## Sign of the Week



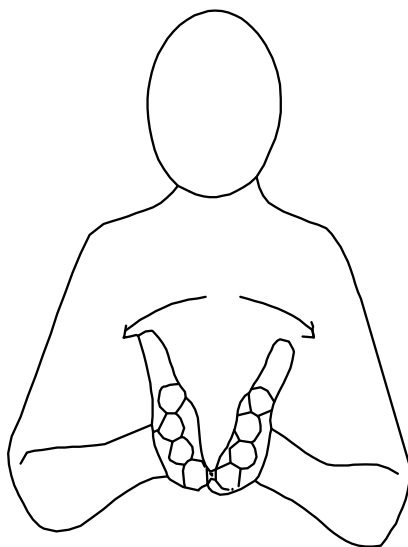
egg



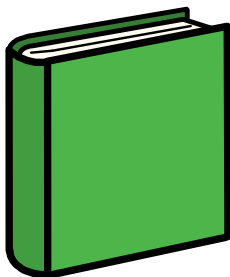
egg



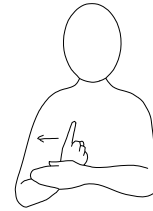
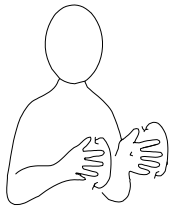
## Sign of the Week



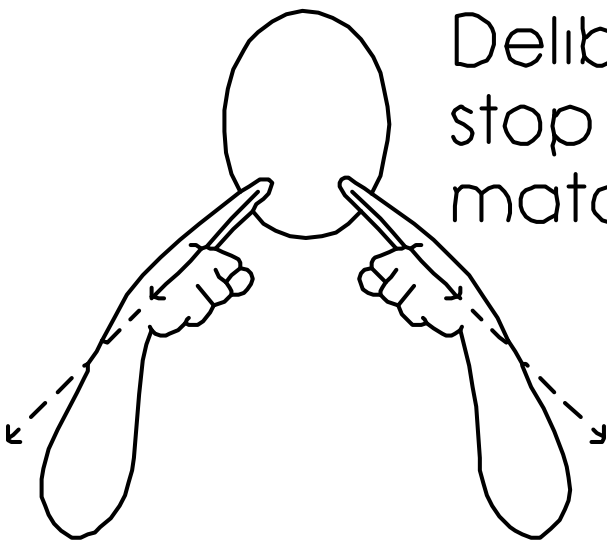
# book



book



## Sign of the Week

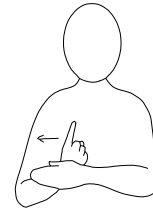
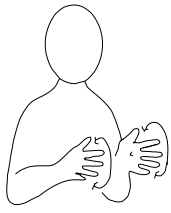


Deliberate movement,  
stop sign momentarily to  
match syllables in word

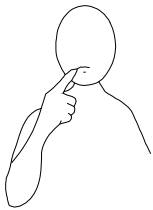
# Guru



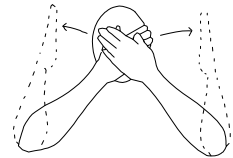
## Guru



## Sign of the Week



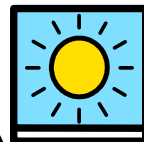
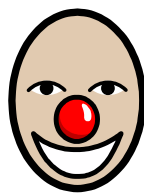
Right index  
finger touches  
tip of nose



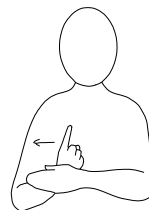
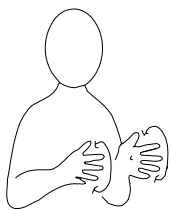
Red

Nose

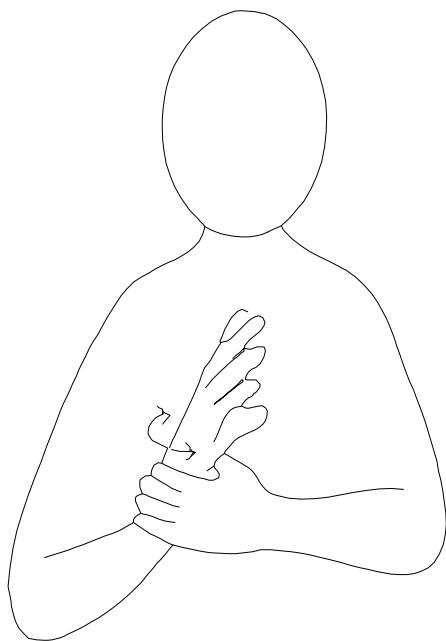
Day



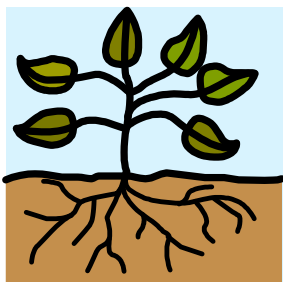
## Red Nose Day



## Sign of the Week



plant



plant